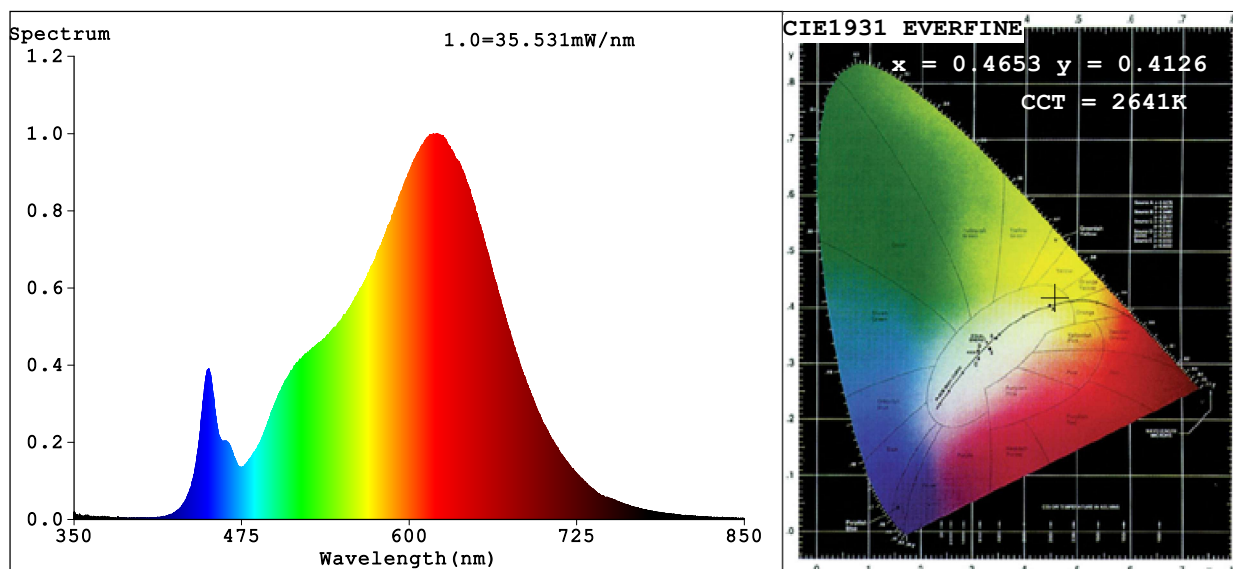


## Spectrum Test Report



### Color Parameters:

Chromaticity Coordinate:  $x=0.4653$   $y=0.4126$   $u'=0.2651$   $v'=0.5289$

CCT=2641K (Duv=0.0003) Dominant WL:Ld =584.4nm Purity=63.5%

Ratio:R=26.9% G=70.8% B=2.3%; Peak WL:Lp=620.7nm FWHM=127.6nm

Render Index:Ra=92.0 CRI=89.4 TM30:Rf=90 Rg=99

R1 =92 R2 =96 R3 =99 R4 =93 R5 =93 R6 =97 R7 =89

R8 =76 R9 =49 R10=92 R11=96 R12=86 R13=93 R14=100 R15=86

### Photo Parameters:

Flux = 1571 lm Eff. : 78.32 lm/W Fe = 5.343 W

### Electrical parameters:

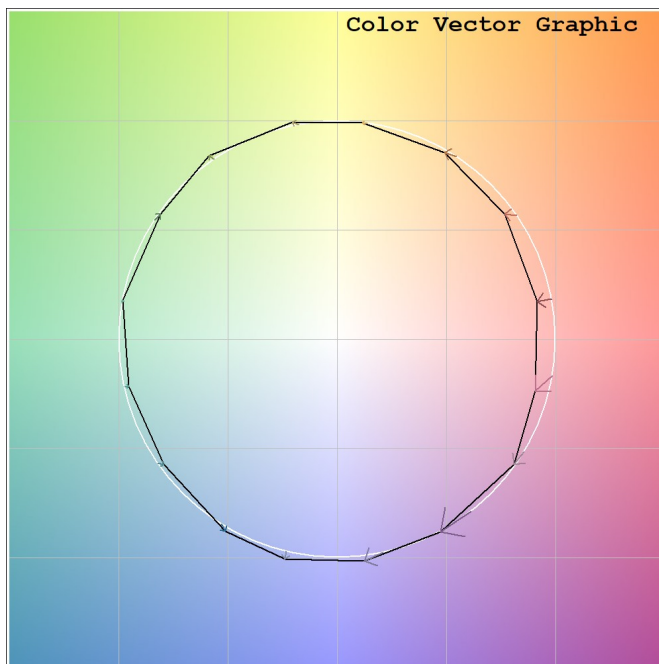
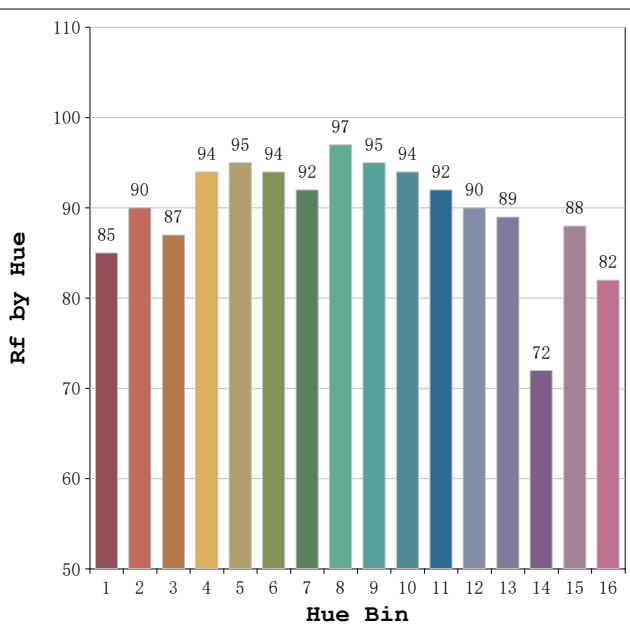
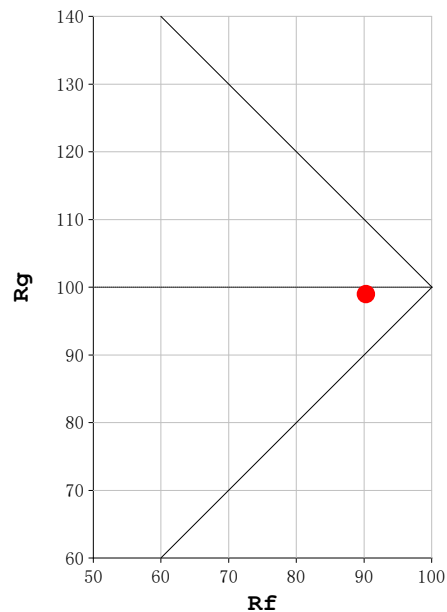
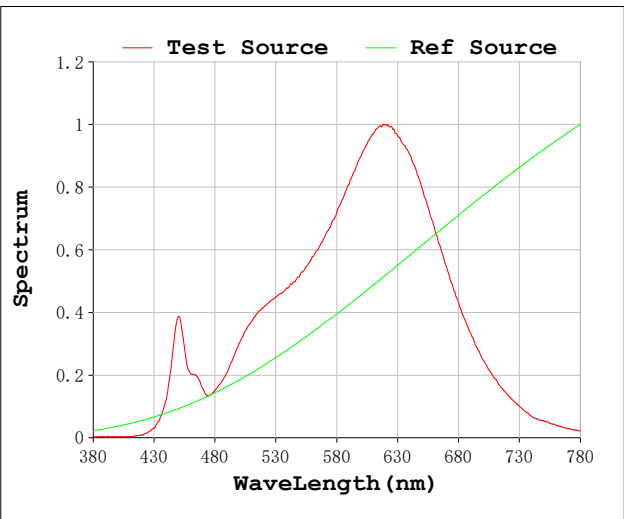
V = 23.998 V I = 0.8357 A P = 20.06 W PF = 1.000

Status: Integral T = 606 ms Ip = 37794 (58%)

Model:Ecoled Neón 360 Memory  
Tester:Sergio Carneros  
Temperature:27Deg  
Manufacturer:Guoying - Estar

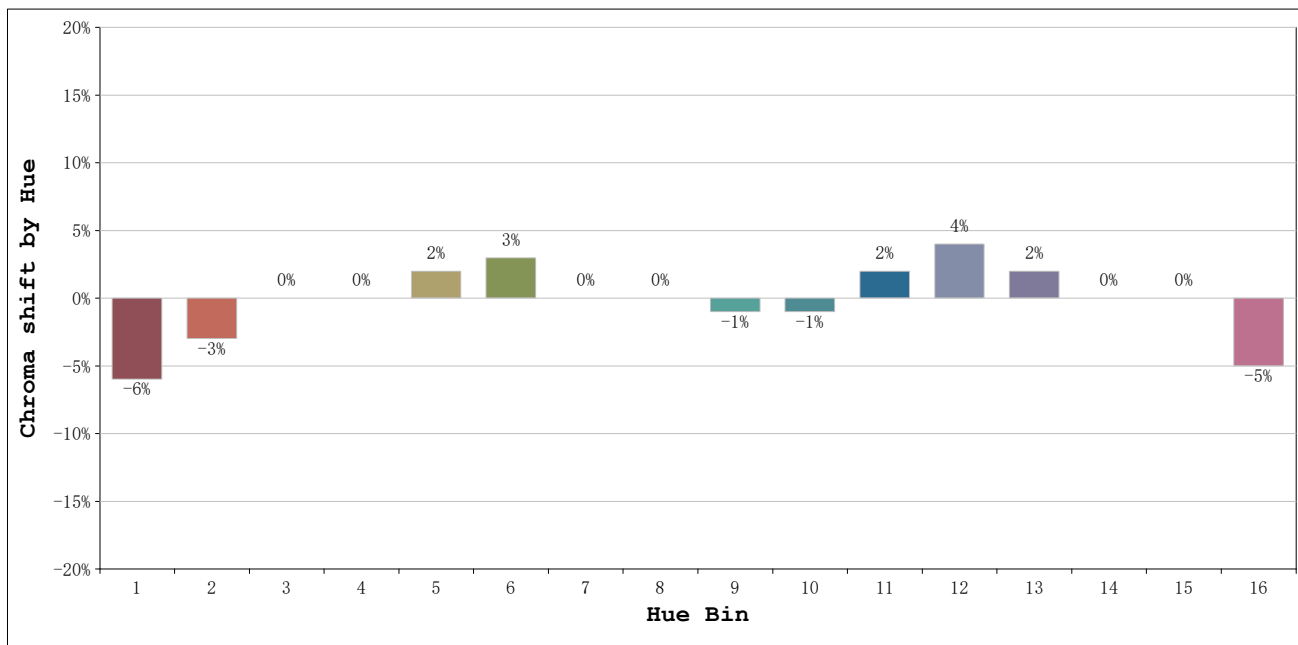
Number: 10.338  
Date:2025-12-11 08:17:33  
Humidity:35%  
Remarks:100cm de neón

**Rf: 90**      **CCT: 2641 K**      **u': 0.2651**  
**Rg: 99**      **Duv: 0.0003**      **v': 0.5289**



Model:Ecoled Neón 360 Memory  
 Tester:Sergio Carneros  
 Temperature:27Deg  
 Manufacturer:Guoying - Estar

Number: 10.338  
 Date:2025-12-11 08:17:33  
 Humidity:35%  
 Remarks:100cm de neón



			Graphic shift(%)	
Hue Bin	Hue Angle	Rf	Chroma	Hue
1	0.0° - 22.5°	85	-6	0
2	22.5° - 45.0°	90	-3	3
3	45.0° - 67.5°	87	0	6
4	67.5° - 90.0°	94	0	2
5	90.0° - 112.5°	95	2	3
6	112.5° - 135.0°	94	3	1
7	135.0° - 157.5°	92	0	-3
8	157.5° - 180.0°	97	0	0
9	180.0° - 202.5°	95	-1	0
10	202.5° - 225.0°	94	-1	2
11	225.0° - 247.5°	92	2	4
12	247.5° - 270.0°	90	4	0
13	270.0° - 292.5°	89	2	-8
14	292.5° - 315.0°	72	0	-16
15	315.0° - 337.5°	88	0	-6
16	337.5° - 360.0°	82	-5	-7

Model:Ecoled Neón 360 Memory  
 Tester:Sergio Carneros  
 Temperature:27Deg  
 Manufacturer:Guoying - Estar

Number: 10.338  
 Date:2025-12-11 08:17:33  
 Humidity:35%  
 Remarks:100cm de neón